

Outback (PVC) Grade 1

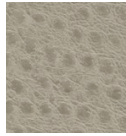
100,000 double rubs



Alabaster



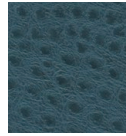
Flax



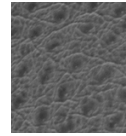
Cement



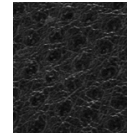
Cobblestone



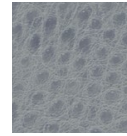
Baltic



Quartz



Coal



Glaze

Prestige (fabric) Grade 1

100,000 double rubs



Sage



Slate



Mustard



Camel



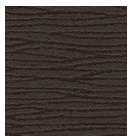
Forest



Greystone

Congo (PVC) Sta-Kleen Grade 2

200,000 double rubs



Branch



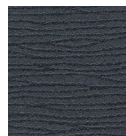
Glacier



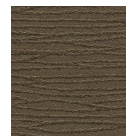
Granite



Indigo



Lead



Portabello



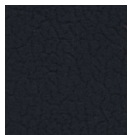
Ramie



Teal

Splendid (fabric) Grade 2

200,000 double rubs



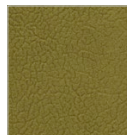
Midnight



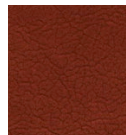
Lagoon



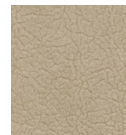
Whisper



Pear



Cinnabar



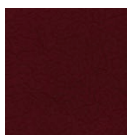
Almond



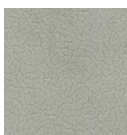
Posh



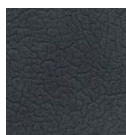
Brownstone



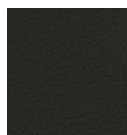
Pomegranate



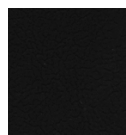
Quicksilver



Chambray



Seal



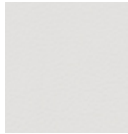
Peppercorn

Lavish (PVC) Grade 2

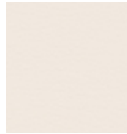
100,000 double rubs



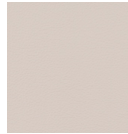
Daisy



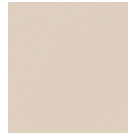
Pearl



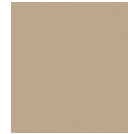
Swan



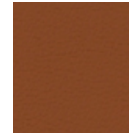
Cool Grey



Driftwood



Khaki



Saddle



Anthracite

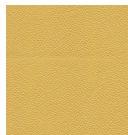


Obsidian

Zenith (leather) Grade 3



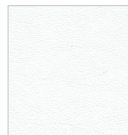
Acciaio



Ananas



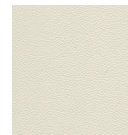
Arancio



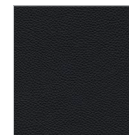
Bianco



Chartreuse



Ecrú



Nero



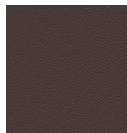
Pietra



Piombo



Rosso



Umber



Viola

In-stock leather, fabric and vinyl program

ultrasuede®



COM - COL Grade 1

